

ທຸງຮາ
Trombone 2

73



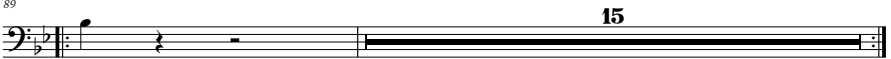
78



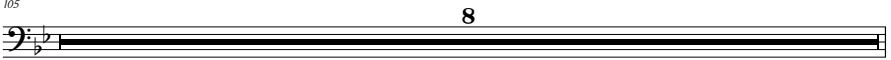
83



89



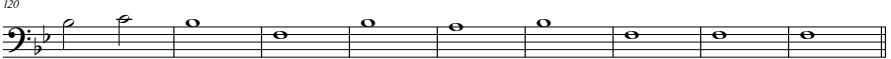
105



113



120



129



135



140



147



ທຸມາຕາ
Trombone 2

213



218



225



231



237



242



246



251



257



263

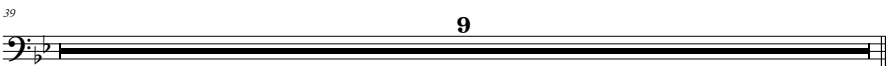


268



พม่าตา
Trombone 2

ส่วนขึ้น ท่อน ๖



พม่าตา
Trombone 2

ส่วนอื่น ท่อน ๔



5



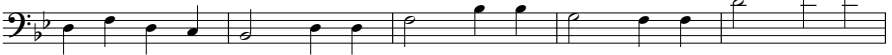
10



15



20



25



30



35



41



พม่าตา
Trombone 2

สองชั้น 4/4

8

15

21

25

29

36

43

50

55

61

68

ທຸງຮາ
Trombone 2

11

76



84



92



101



107



112



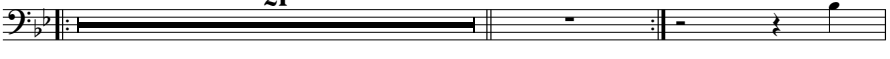
118



123



129



152



159

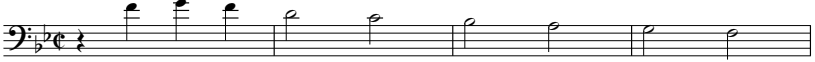


165



ພາວະ
Trombone 2

ສ່ວນ ກ່ອນ ມ



5



10



15



ສ່ວນ ກ່ອນ ມ



6



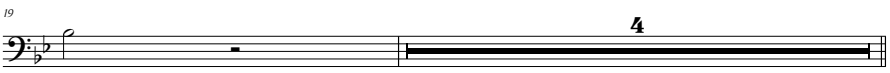
11



16



19

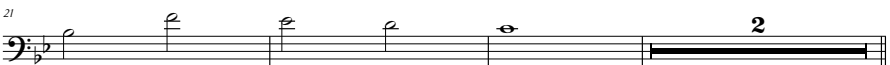
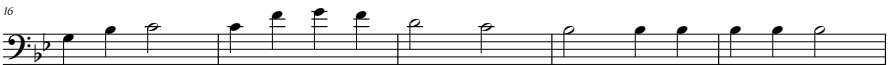


ພູມາຕາ
Trombone 2

ສ່ວນ ກົມ ຂ



ສ່ວນ ກົມ ຂ



ພງຳຕາ
Trombone 2

ສິ້ນຕ້ອນ ກ່ອນ ◦

Musical score for Trombone 2, measures 1-60. The score is written in bass clef with a key signature of two flats (B-flat and E-flat) and a common time signature (C). The music consists of ten staves of notation. Measure numbers 5, 9, 16, 23, 29, 36, 41, 46, 53, and 58 are indicated at the beginning of their respective staves. The notation includes various note values (quarter, eighth, and sixteenth notes), rests, and articulation marks such as slurs and accents. A first ending bracket with a '1.' marking spans measures 41-45, and a second ending bracket with a '2.' marking spans measures 46-48. The score concludes with a double bar line at the end of measure 60.

